



14402 Frankford Ave | Lubbock, TX 79424
(806) 701-4551 | Fax: (806) 701-4553 | www.fisherind.com

Fisher Sand & Gravel Co.
Arizona Drilling & Blasting
Fisher Grading & Excavation
Fisher Ready Mix
Southwest Asphalt
Southwest Asphalt Paving
Fisher Sand & Gravel - New Mexico, Inc.
General Steel and Supply Company

April 20, 2018

Brownwood County
200 South Broadway
Brownwood, TX 76801

Reject

Sub: Blasting and Crushing Limestone and Caliche Rock Proposal

Dear Sirs;

We are pleased to present our proposal for the *Blasting and Crushing Limestone and Caliche Rock* project listed on your county website, due April 20, 2018.

We appreciate the opportunity to introduce our company and services to you and look forward to working with you.

If you have any questions regarding our bid, please contact Robin Stephenson at (806) 701-4551 or email her at rstephenson@fisherind.com.

Respectfully Yours,

Guy Keith
Fisher Sand & Gravel

Blasting & Crushing
Limestone + Caliche Rock

April 23, 2018
(Exhibit #5)



Fisher Industries | 14402 Frankford Ave | Lubbock, TX 79424 | ph (806) 701-4551 | fax (806) 701-4553

SCOPE OF WORK SUPPLEMENT
MATERIALS QUOTE

Project Blasting and Crushing Limestone and Caliche Rock
 Name Brownwood County Date 4/20/2018
 Address 200 South Broadway #322
 City Brownwood State TX ZIP 76801 Quote _____
 Phone 325-643-1985 Larry Traweek Proj ID: _____

Item #	Qty	Description	Unit	Price	TOTAL
1		Blasting and crushing limestone and caliche rock to be sized at 1 inch minus. (2) pit locations at 10,000 cubic yards each, per Notice of Bid attached. Permit time frames: Up to 60 days Drilling and Blasting Notes: If any water is present in holes, an appropriate wet hole powder will be used at an addition cost.	Cubic Yard	\$12.41	
			pound	\$ 1.35	

SPECIAL TERMS OR CONDITIONS:

Price does not include any applicable taxes.
 Payment terms are net 30 days.
 Contractor shall provide 45 days notice prior to hauling material.
 Material is sold as is. It is the contractor's responsibility to ensure the composite of aggregates passes any further tests required by the mix design.

SubTotal	
Other per Terms	
Taxes	
TOTAL	\$ -

IN WITNESS WHEREOF, the parties indicated below execute this Materials quote agreement.

 By _____ Title _____
 Guy Keith Texas Operations
 By _____ Title _____

All correspondence, please call the office at (806) 701-4551 or email: Robin Stephenson at rstephenson@fisherind.com

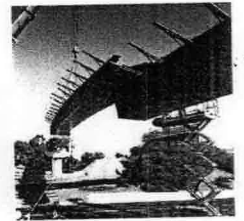
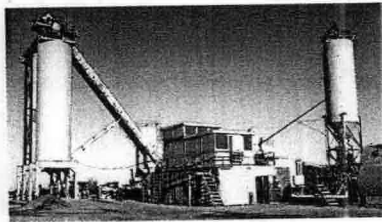
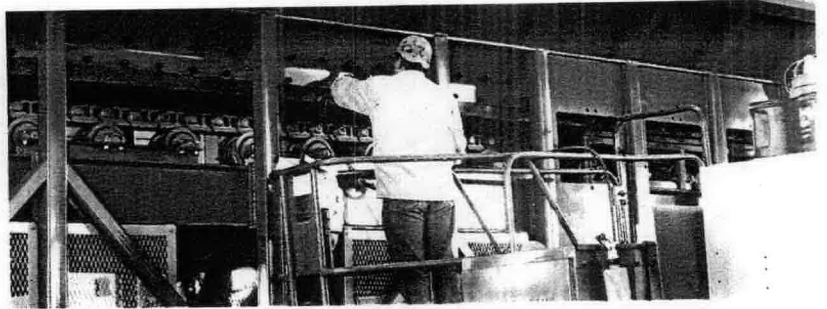
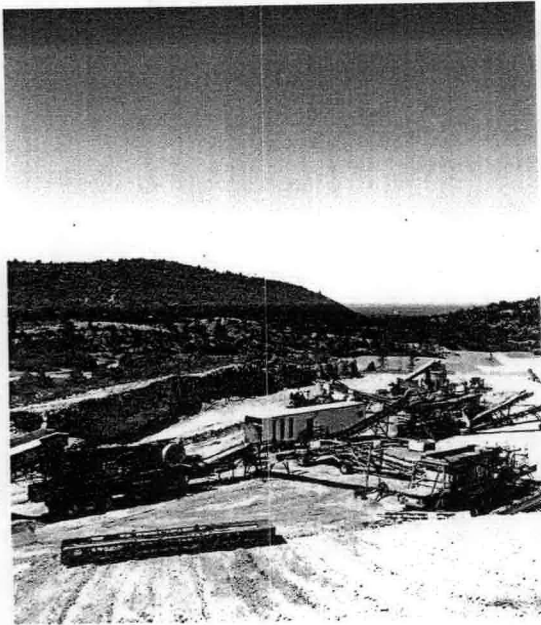
NOTICE FOR BIDS

Brown County will be accepting bids on blasting and crushing limestone and caliche rock to be sized at 1 inch minus. The contractor will also be responsible for pit clean up of all oversized rock. Bids will be accepted in the County Clerk's Office until 5:00 PM, April 20, 2018. Bids will be opened in Commissioners Court on Monday, April 23, 2018.

Brown County reserves the right to accept or reject any or all bids.

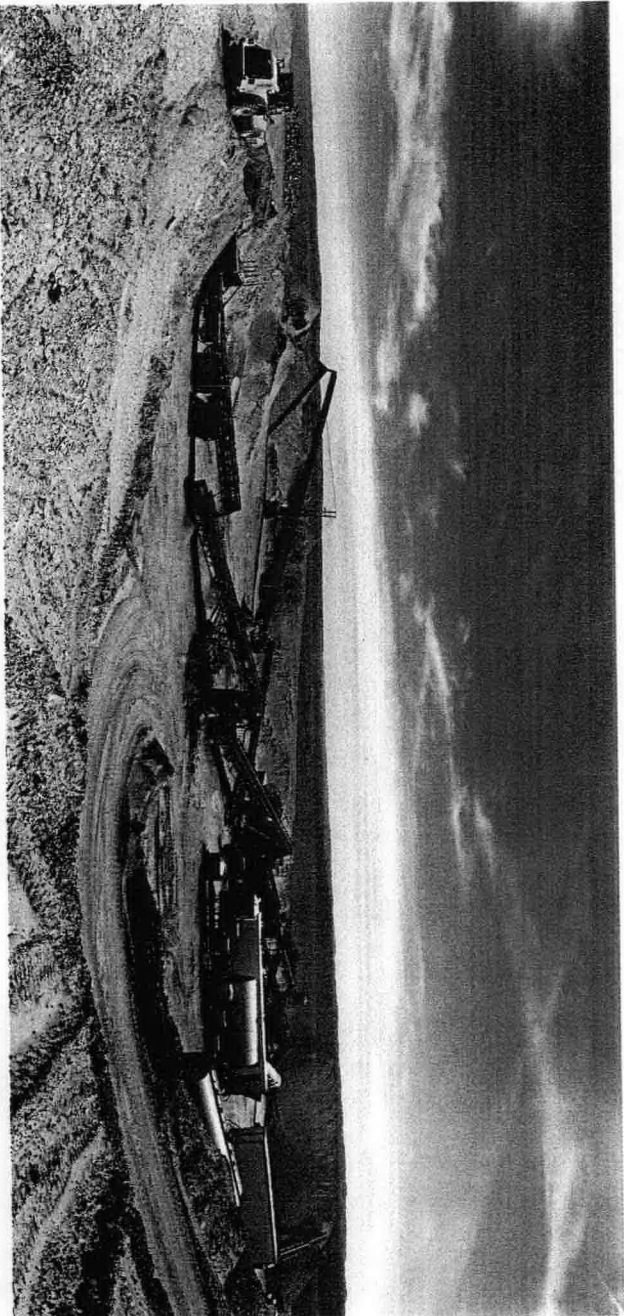


COMPANY PROFILE



WE LIKE THE TOUGH JOBS!

OVERVIEW



WE LIKE THE TOUGH JOBS, AND WE'RE GOOD AT THEM!

Fisher Industries serves all aspects of the aggregate processing industry, from the design and fabrication of aggregate processing equipment, to the processing and end use of aggregate materials. It all started on a small family farm in southwestern North Dakota. Fisher Sand & Gravel Co., the parent company of Fisher Industries, was officially established by Gene Fisher in 1952. It did not take long for this small aggregate processing company to develop a favorable reputation and make a name for itself in the industry. Today, Fisher Sand & Gravel is ranked as one of the top 25 sand and gravel producing companies in the United States.

In 1998, Gene Fisher handed over the reins of his enterprise to his eldest son and current company president, Tommy Fisher. Exhibiting his father's same ambition and vision, Tommy expanded our operations to Arizona and markets in the southwest United States. We have advanced into our third generation of Fisher ingenuity and acumen with Tommy's sons, Grant and Ryan, becoming involved with the company.

In addition to aggregate processing and the fabrication of aggregate processing equipment, we have expanded our portfolio to incorporate all aspects of land development, including: concrete, asphalt, drilling & blasting, excavating, and paving services. We invite you to learn how the Fisher family of businesses can be an integral partner on all your tough jobs!

TABLE OF CONTENTS:

Fisher Sand & Gravel Co.	4
General Steel & Supply Co.	6
Fisher Sand & Gravel - NM Inc.	8
Arizona Drilling & Blasting	10
Fisher Grading & Excavation	12
Fisher Ready Mix	14
Southwest Asphalt	16
Southwest Asphalt Paving	18
Slinger Bridge & Iron	20
Tough Jobs	22
Our Locations	28
Employer Awards	30



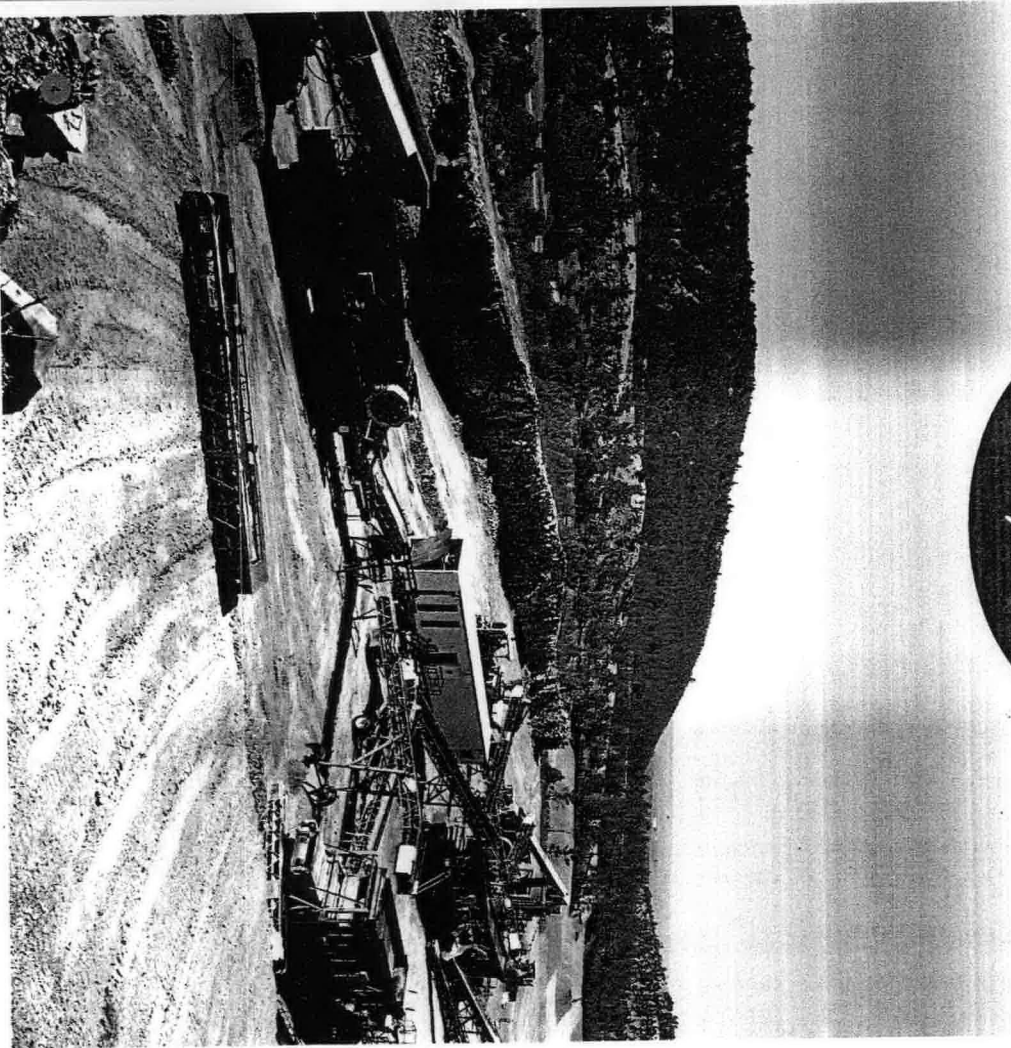
Founder,
Gene Fisher



Company President,
Tommy Fisher



WE LIKE THE TOUGH JOBS!



FISHER SAND & GRAVEL CO.

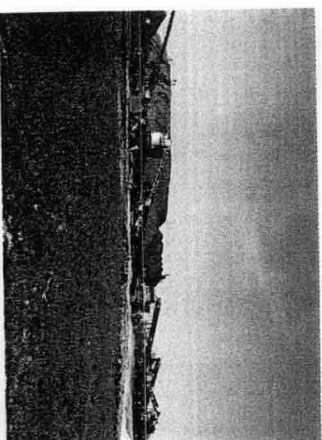
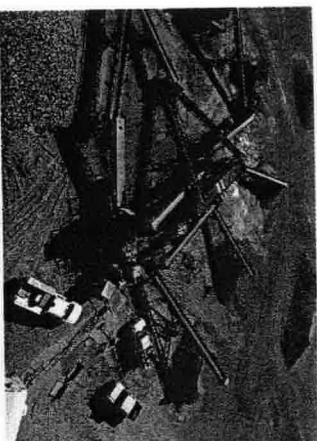
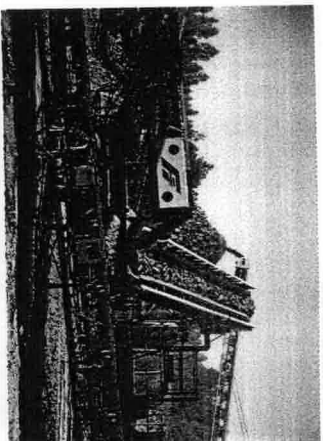
Fisher Sand & Gravel Co. is the parent company of Fisher Industries. Founded in 1952, our main activity has been to locate, process, and deliver sand, gravel, aggregate, and crushing services to contractors for roads, dams, and large public works projects. Fisher Sand & Gravel provides portable asphalt and concrete recycling plants, rock crushing plants, and wash plants. We also provide crushing and processing services to coal and hard rock mines. A third function is the ongoing wholesale and retail production of sand, gravel, and aggregate from commercial pits and quarries owned or leased by Fisher Sand & Gravel.



(800) 932-8740 - Northern Operations
 (877) 796-9238 - Southern Operations

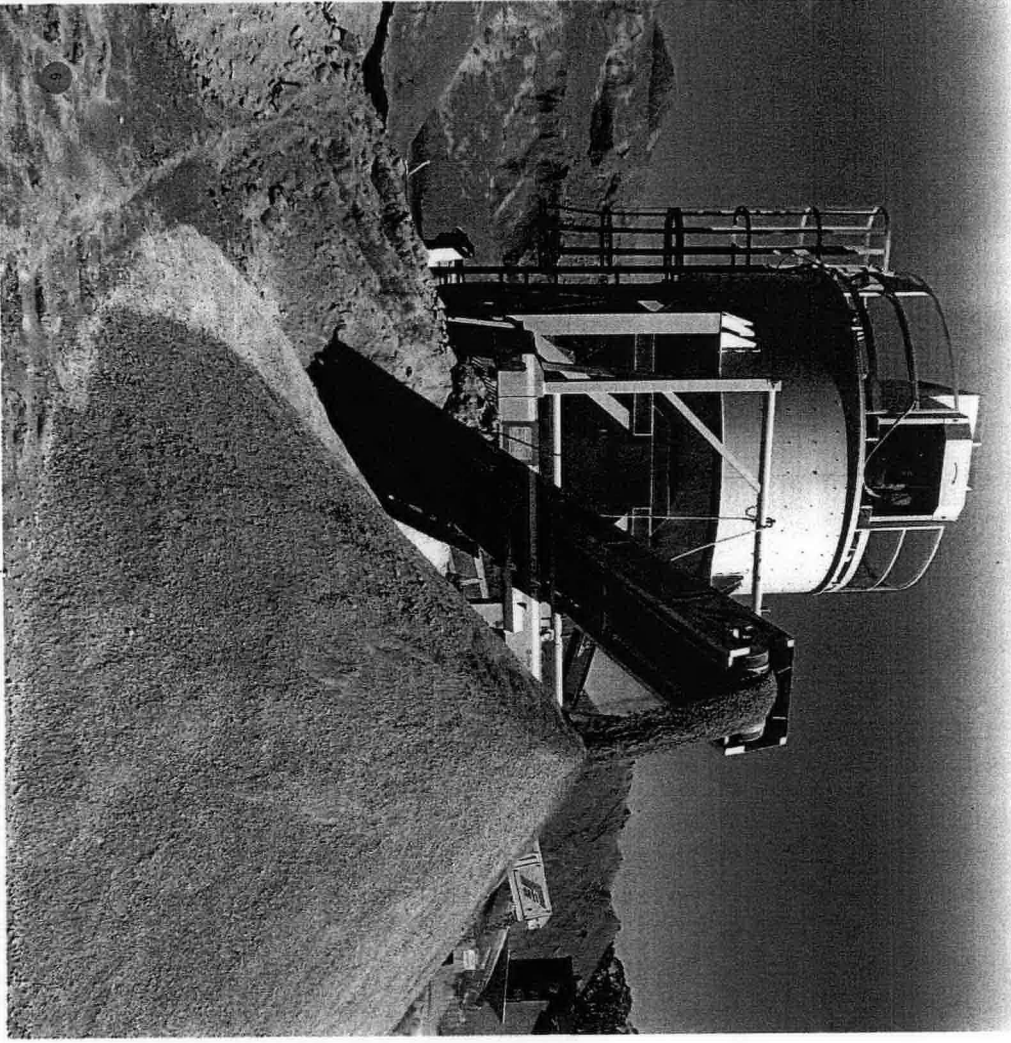


WE LIKE THE TOUGH JOBS!





GENERAL STEEL AND SUPPLY CO.



GENERAL STEEL & SUPPLY CO.

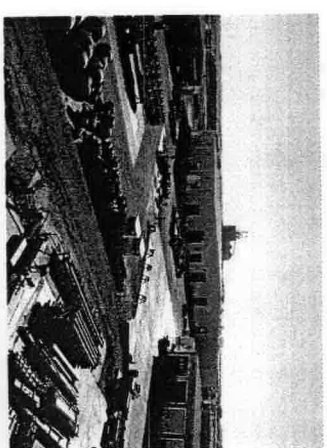
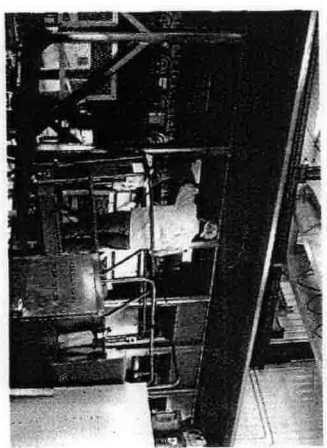
A SUBSIDIARY OF FISHER SAND & GRAVEL CO.

General Steel & Supply Company is the manufacturing division of Fisher Industries. Founded in 1967, General Steel was originally established to be a support system for Fisher Sand & Gravel field operations. It did not take long for outside customers to take notice of the durability and efficiency of our equipment pieces. Today we design and fabricate high-quality aggregate processing equipment for companies all over the world. Our signature piece is the patented Fisher Air Separator, a leader in Air Separation technology.

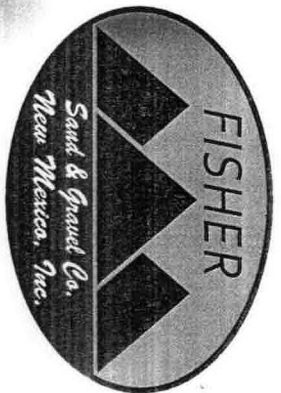
Our engineering, manufacturing, and sales staff work closely with field operations on a daily basis in order to get first-hand understanding of problems and solutions. The combined result is a system that works consistently and efficiently under real working conditions. We operate a 40,000 sq ft repair facility, a 56,000 sq ft manufacturing facility, and a 100,000 sq ft warehouse. General Steel is also a major wholesaler and retailer of steel and parts.



(800) 932-8740
sales@fisherind.com



WE LIKE THE TOUGH JOBS!



FISHER SAND & GRAVEL - NM, INC.

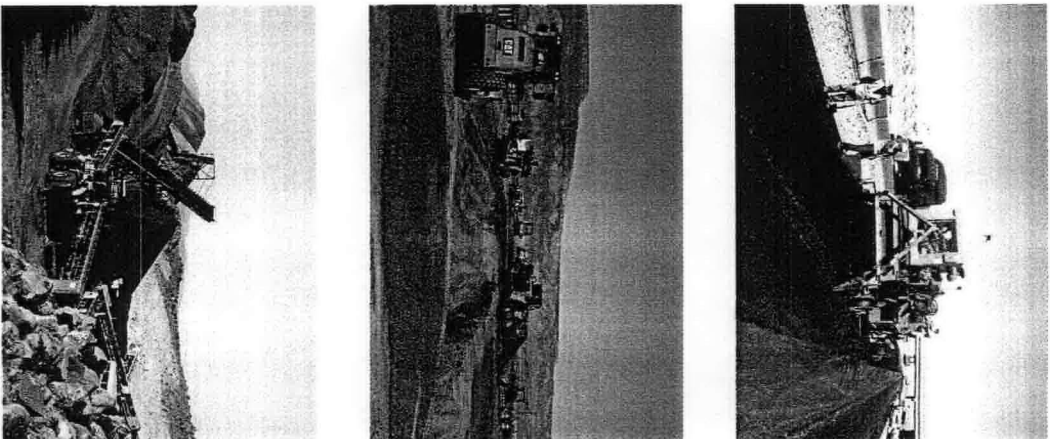
A SUBSIDIARY OF FISHER SAND & GRAVEL CO.

Fisher Sand & Gravel - New Mexico, Inc. is the southwestern sister of Fisher Sand & Gravel Co., providing the same great service and quality products to New Mexico and surrounding areas. We are a full service company equipped to handle commercial pit and crushing projects. We are also a leader in asphalt and paving projects for the New Mexico market and beyond. Utilizing the latest in technologies, like warm mix asphalt, our paving crews are knowledgeable, efficient, and take pride in jobs done well.

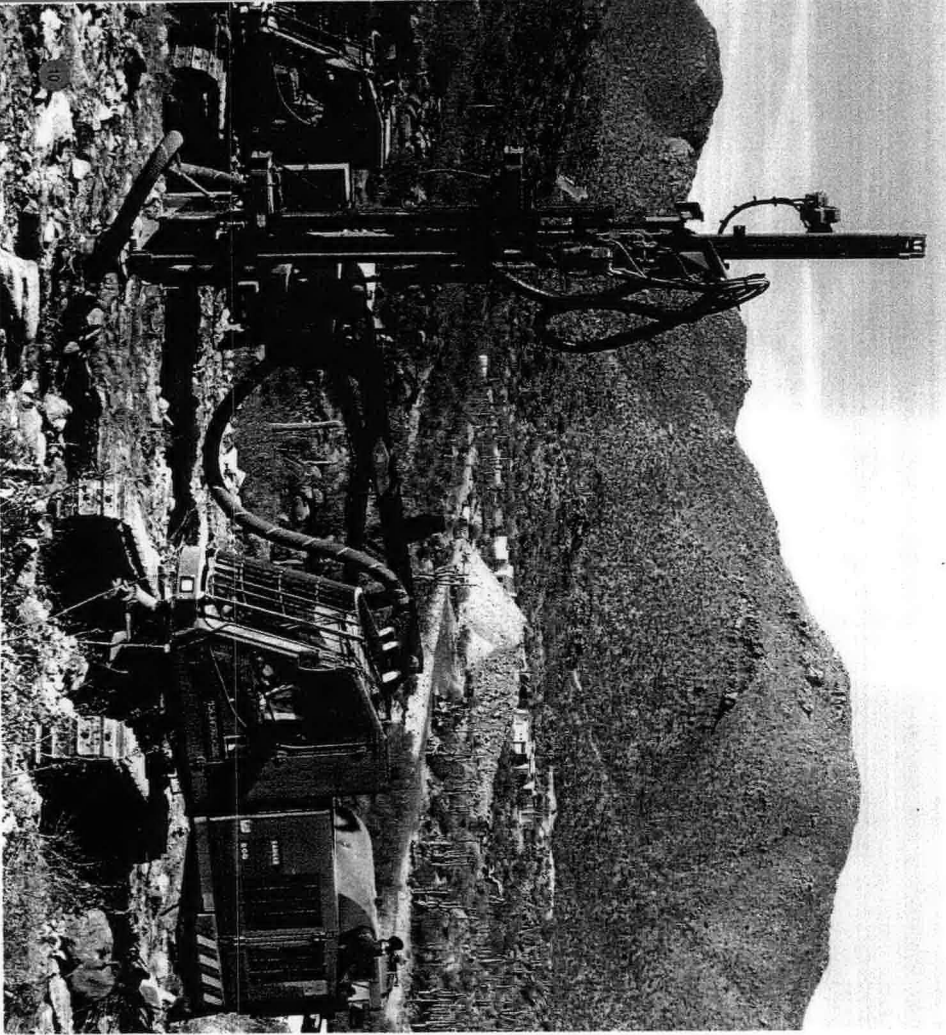
Fisher Sand & Gravel - NM, Inc. has been the recipient of several statewide Smoothness Awards for paving projects as well as a number of National Asphalt Pavement Association (NAPA) Quality in Construction Awards. These awards are given to companies that exhibit excellence in construction of an asphalt pavement, meeting or exceeding industry best practices.



(866) 460-7927



WE LIKE THE TOUGH JOBS!



ARIZONA DRILLING & BLASTING

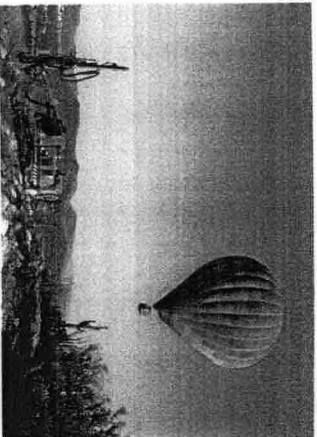
A DIVISION OF FISHER SAND & GRAVEL CO.

Arizona Drilling & Blasting joined Fisher Industries in 2006 and has proven to be an invaluable member of our team, allowing us to internally control blast quality and quantity. Our experienced, knowledgeable, explosive engineers strive for a 100% safety record.

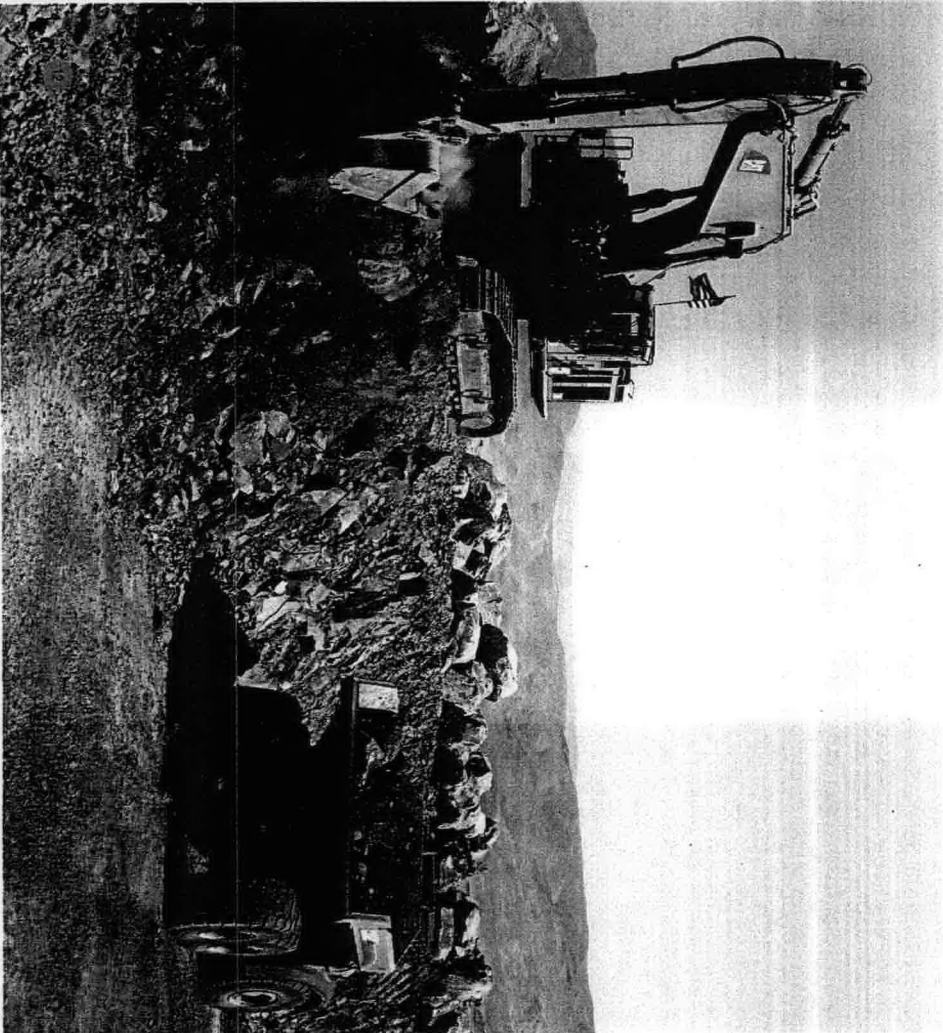
Look to Arizona Drilling & Blasting for quality, safe blasting for your construction or mining applications. We are experienced in mass grading, site development, roadways, heavy highways, utilities, mass excavation, boat ramps, marina development, quarry development and pioneering access, production and open pit mining. We have a proven track record with seismograph monitoring programs implemented at all blasting sites. We've worked with pits and quarries in Arizona, California, Colorado, Hawaii, Montana, Nevada, New Mexico, North Dakota, Oklahoma, South Dakota, Texas, Utah, Washington, and Wyoming.



(877) 796-9238



WE LIKE THE TOUGH JOBS!



FISHER GRADING & EXCAVATION

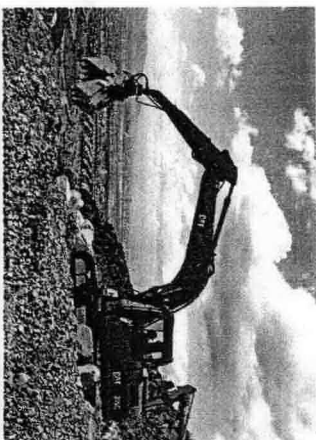
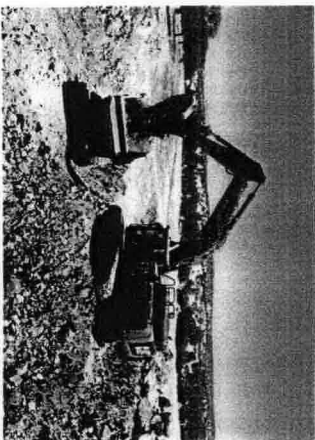
A DIVISION OF FISHER SAND & GRAVEL CO.

Fisher Grading & Excavation provides diversified general construction and engineering services and specializes in major earthwork projects. No job is too big or too small. We work with clients from the initial project design and each step along the way: pioneering, blasting, dozing, excavating, crushing, and hauling or replacing material. Our finishing crews will see earthwork assignments all the way through to the underground utility work.

In 2007, Fisher Industries secured the largest contract ever awarded by the Nevada Department of Transportation. Linking Reno and Carson City, Nevada, the I-580 Freeway Extension included nine bridges and eight and one-half miles of brand new, six lane freeway. The bridge spanning Galena Creek extends 1,722 feet and stands nearly 300 feet tall. At the time of completion (June 2012), the Galena Creek bridge boasts being the largest cathedral arch bridge in the world. Fisher Grading & Excavation, working with the entire Fisher family of businesses, played an integral role in this massive civil earthwork project.

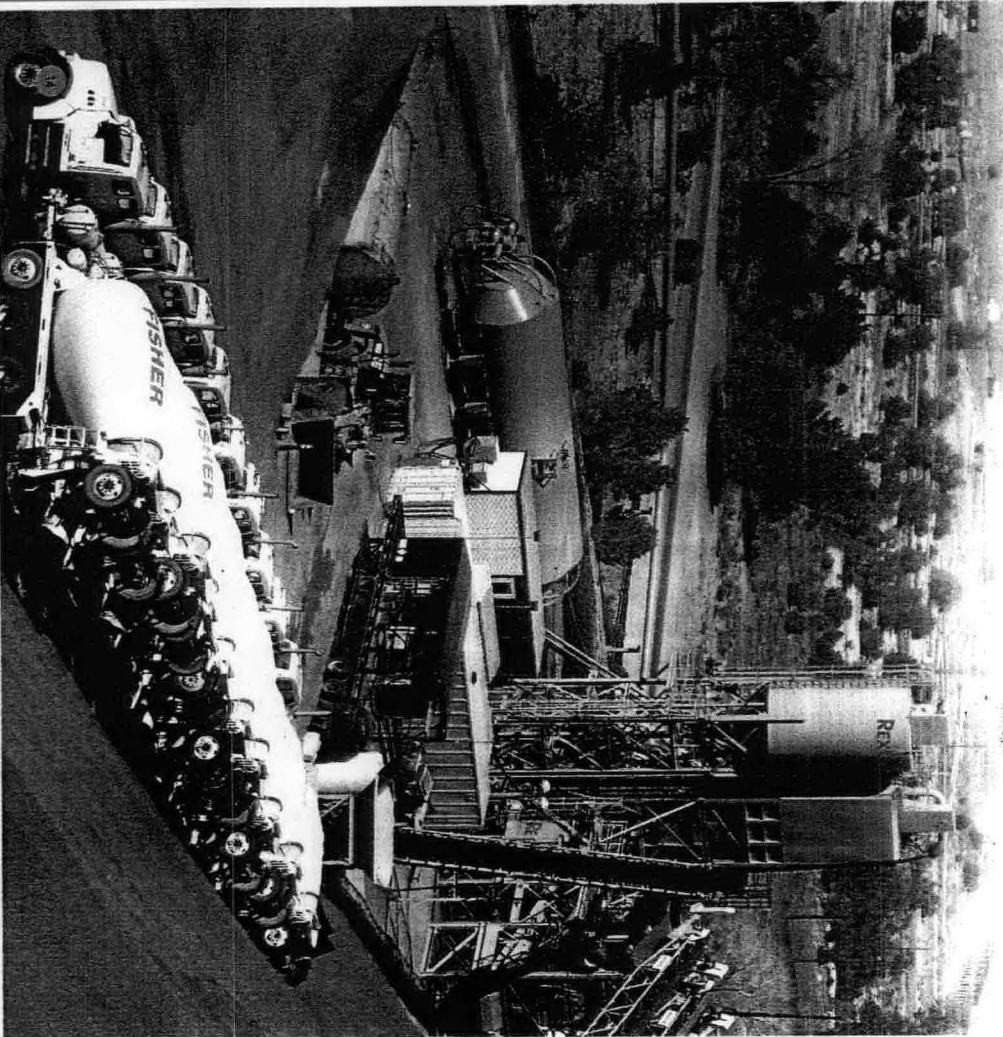


(877) 796-9238



WE LIKE THE TOUGH JOBS!

Fisher Industries
Fisher Ready Mix



FISHER READY MIX

A DIVISION OF FISHER SAND & GRAVEL CO.

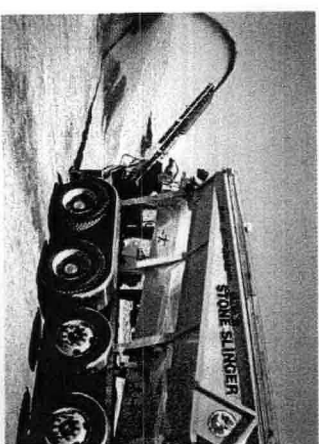
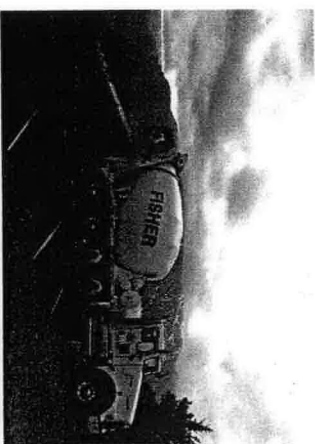
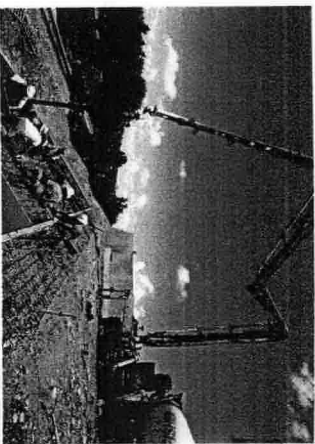
Fisher Ready Mix provides concrete and concrete pumping services for a wide range of projects from housing developments to municipal water projects and highway bridge construction. We will batch mix products to customer specifications and our 36 meter concrete pump aids in the placement of concrete slabs and walls and provides boom placement for large commercial jobs.

Our line-up of time and money saving construction equipment includes an Ultra Stone Slinger™. The Ultra Stone Slinger™ puts what you want where you want it. With a 220 degree radius, it will put topsoil, dirt, mulch, screening, aggregates, and sand in hard to reach locations. We can place material in tight spaces up to 90 feet from the end of the truck, virtually eliminating material handling time thus reducing construction costs and improving your bottom line.

Fisher Industries
Fisher Ready Mix

(406) 657-9608

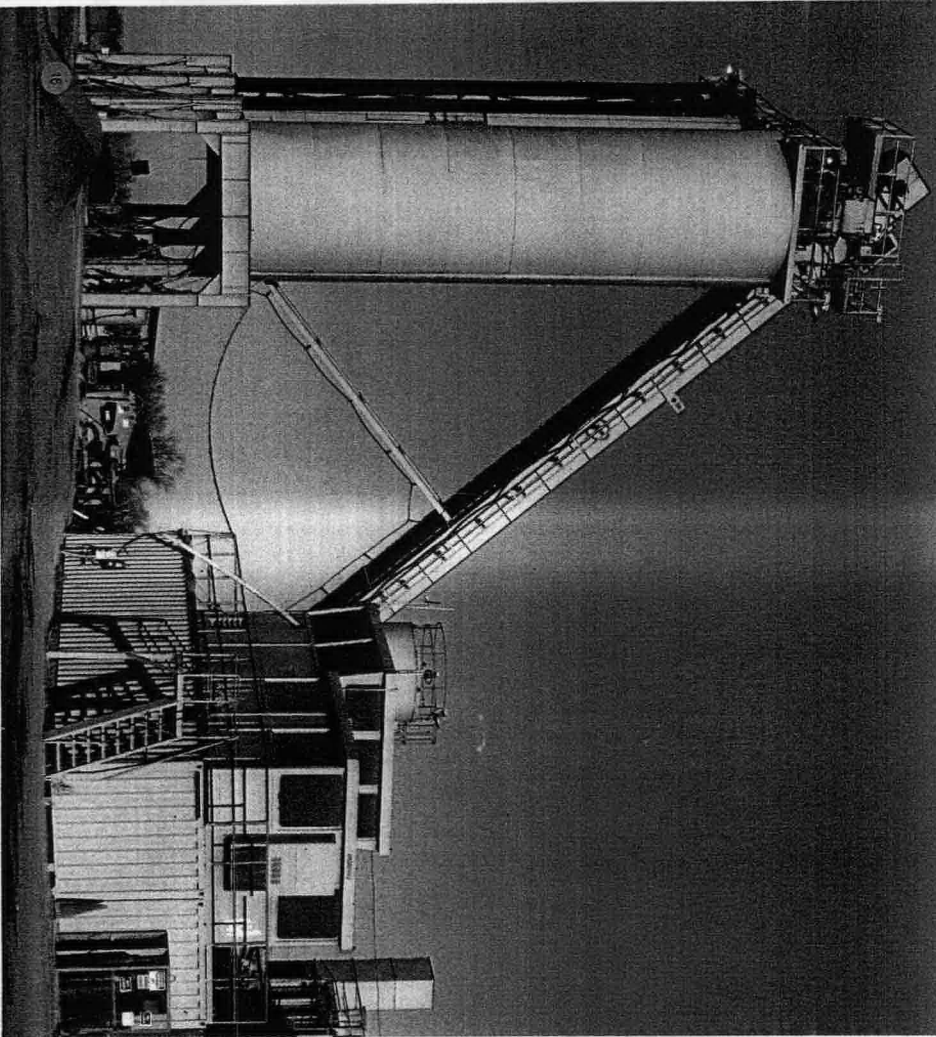
Fisher Industries



WE LIKE THE TOUGH JOBS!



SOUTHWEST Asphalt



SOUTHWEST ASPHALT

A DIVISION OF FISHER SAND & GRAVEL CO.

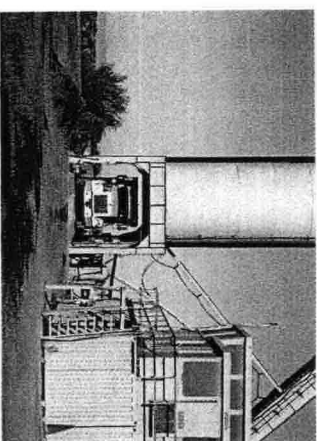
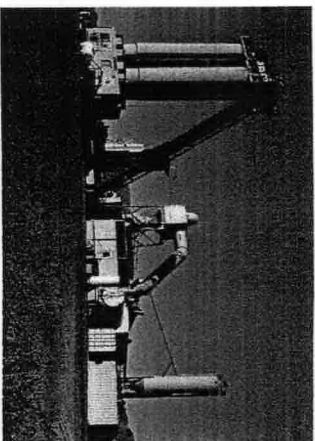
Southwest Asphalt joined the Fisher Industries team in 2006. It started with, and maintains the most talented individuals in the industry of sales, dispatch, operations, and quality control. Currently, Southwest Asphalt operates four hot plants and is the second largest supplier in Arizona, producing and selling 800,000 to 1.2 million tons of asphalt concrete per year.

Southwest Asphalt supplies and maintains a large customer base from a wide range of fields within the construction industry including: heavy highway, maintenance, residential, commercial, and utility. In addition to our standard products, we also produce a large amount of rubberized asphalt. We maintain and operate two rubberized blending plants in the greater Phoenix area. Other specialty products include the introduction of fiber into asphalt for parking lots to control reflective cracking and warm mixed asphalt. Warm mix technologies allow us to produce a mixture at a reduced temperature, while reducing emissions, fuel consumption, and aiding in compaction.



SOUTHWEST Asphalt

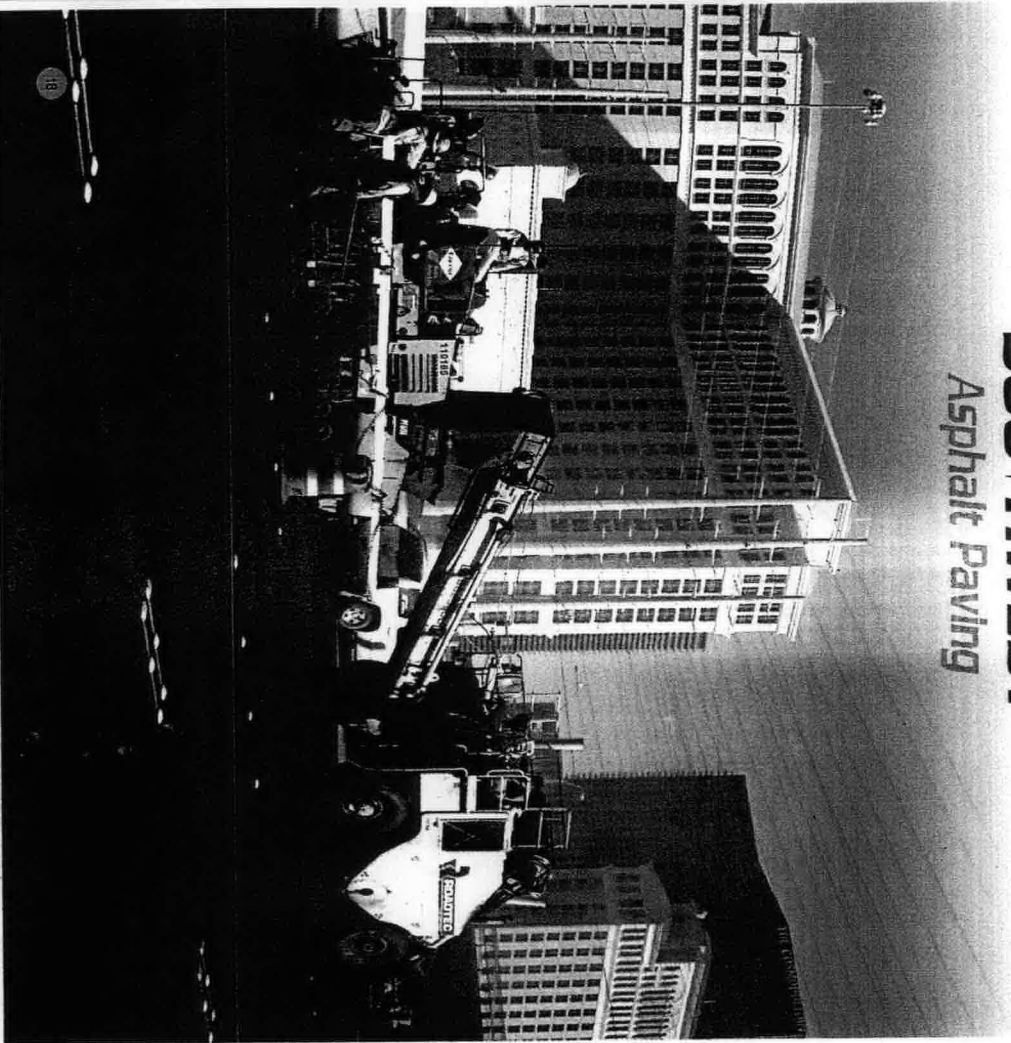
(877) 796-9238



WE LIKE THE TOUGH JOBS!



SOUTHWEST Asphalt Paving



SOUTHWEST ASPHALT PAVING

A DIVISION OF FISHER SAND & GRAVEL CO.

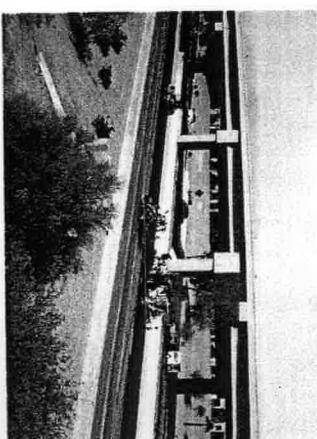
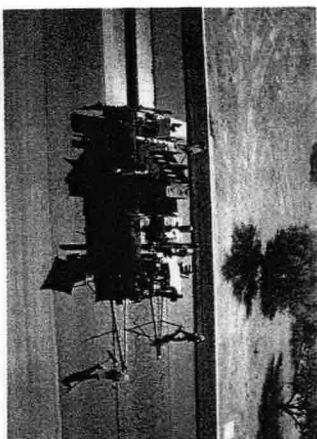
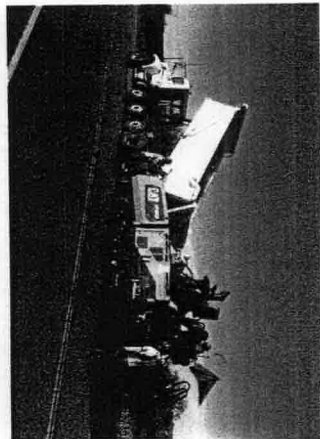
Southwest Asphalt Paving uses quality asphalt products with the latest in lay-down technology to ensure paving projects are completed on time and within budget. Our ganut of services extends well beyond paving. When necessary, we build up roadways and install adequate drainage, all while working to improve traffic flow & safety and ensuring the preservation of the natural beauty of the southwest.

We have perfected a "quiet pave" technology, utilizing rubberized asphalt. It ensures the people traveling on our roads a pleasant, quiet drive virtually free from wheel noise.



SOUTHWEST Asphalt Paving

(877) 796-9238



WE LIKE THE TOUGH JOBS!

STINGER



BRIDGE & IRON

STEEL GIRDER, LLC DBA



STINGER BRIDGE & IRON

AN AFFILIATE OF FISHER SAND & GRAVEL CO.

Steel Girder, LLC, db/a Stinger Bridge & Iron is an AISC certified major bridge fabricator and erector with fracture-critical and sophisticated paint endorsements. We are the premier major bridge fabricator of the west. Regardless of size, shape, or design of the project, we have the knowledge, experience, and tools necessary to produce exemplary results. Our fast-turn capability and team focus result in top-quality products completed in record time. We can design, fabricate, deliver, and install bridges and bridge components per specifications and on time.

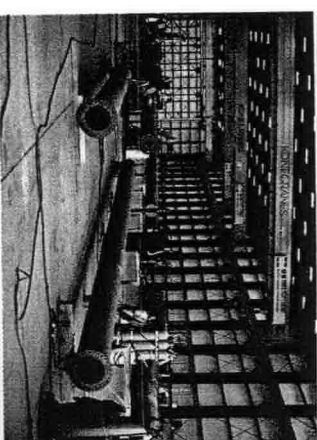
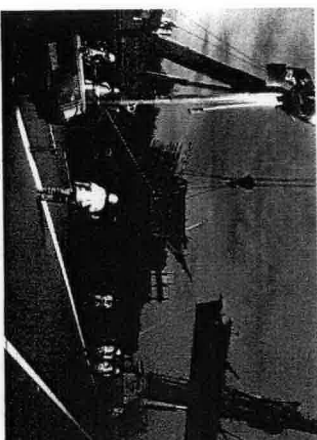
STINGER



BRIDGE & IRON

STEEL GIRDER, LLC DBA

(520) 723-5383



Fisher
Industries

WE LIKE THE TOUGH JOBS!

21

TOUGH JOBS



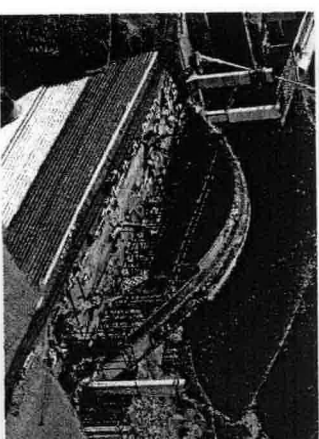
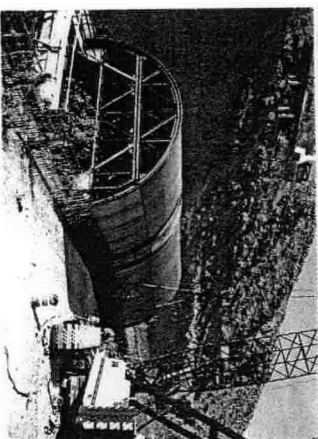
I-580 FREEWAY EXTENSION

In 2007, Fisher Industries secured what was at the time the largest contract ever awarded by the Nevada Department of Transportation. Linking Reno to Carson City, Nevada, the project consisted of 8.4 miles of brand-new six lane freeway, and the construction of 9 bridges, including the 1,722 foot Galena Creek Bridge. Standing at nearly 300 feet tall, the Galena Creek Bridge boasts being the largest cathedral arch bridge in the world.

This project consisted of complex environmental commitments, ecological constraints, and permitting requirements with numerous federal and local agencies. We worked closely with these agencies from beginning to end to ensure all requirements were met or exceeded. Fisher Industries, along with our subcontractors and suppliers, and in close partnership with the Nevada DOT, created an atmosphere to successfully complete a project that was awarded the ENR Southwest 2013 Project of the Year.

I-580 PROJECT FACTS:

- ▶ 8.4 miles of new freeway
- ▶ 5.2 million yards of excavation
- ▶ 17.5 miles of drainage pipe
- ▶ 345,000 cubic yards of riprap
- ▶ 380,000 square feet of MSE walls
- ▶ 200,000 tons of asphalt paving
- ▶ 360,000 square yards of concrete paving
- ▶ 17.8 million pounds of rebar
- ▶ 180,000 cubic yards of structural concrete



WE LIVE THE TOUGH JOBS!

TOUGH JOBS



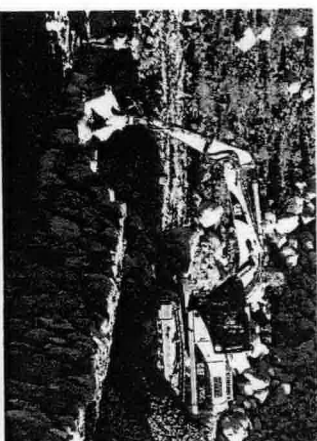
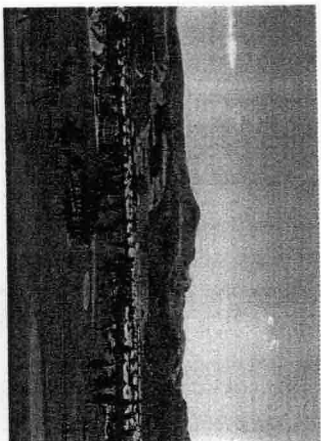
ASCAYA DEVELOPMENT

In 2004 Fisher Grading & Excavation began work on a \$252 million, five year, high-end residential project located on top of Black Mountain in Henderson, NV. Dubbed "Ascaya", the job entailed excavating 313 residential lots out of a mountain of rock as well as the construction of 32 miles of 14 foot high rock retaining walls. Each boulder in these walls was individually selected and placed by our operators.

The project site encompassed 663 acres, over one square mile, with nearly every acre having an excellent view of the Las Vegas strip. Throughout the course of the job, approximately 15 million cubic yards of material was drilled, blasted, processed, relocated, and placed on site. This turn-key project not only included mass excavation, but also the design and installation of all utilities including: power, cable, telephone, gas, water distribution system, sanitary, sewer, storm water, curbing, gutters, and asphalt.

ASCAYA DEVELOPMENT FACTS:

- ▶ 663 acres
- ▶ 313 residential lots
- ▶ 14.7 million cubic yards excavated
- ▶ 2.78 million square feet of rock retaining walls
- ▶ 6.8 million cubic yards of aggregates processed
- ▶ 1 million+ project man-hours
- ▶ 1,000 foot elevation difference



WE LIKE THE TOUGH JOBS!

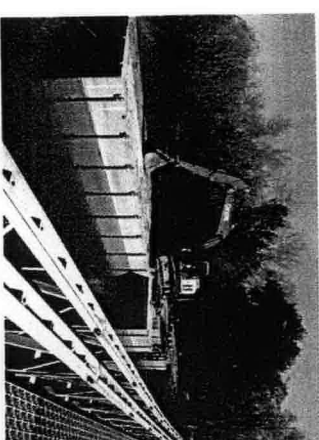
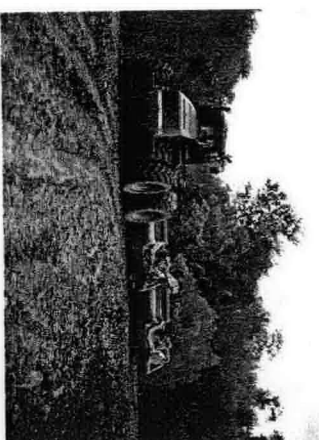
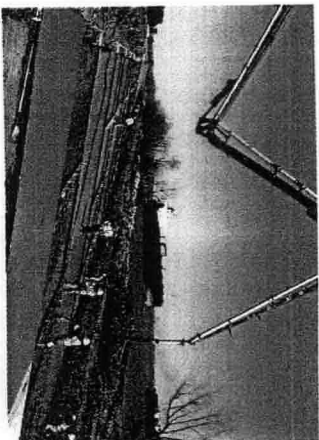
TOUGH JOBS



LOUISIANA LEVEE PROJECTS

In 2014 Fisher Sand & Gravel Co. began working as a subcontractor doing 100% of the earthwork required to construct 8 miles of new levee next to an existing levee about 15 miles south of New Orleans, Louisiana. Phase 1 of this job consisted of clearing and grubbing, de-grading, and installation of settlement plates. Phase 2 involved de-grassing the existing levee and hauling in an additional 316,000 cubic yards of embankment to build to final design elevation. Working in the marshy conditions of the southeast has presented our company with a new set of challenges. We have adapted and added to our equipment fleet and learned tricks and techniques that allow us to expertly maneuver the soft and often unstable ground.

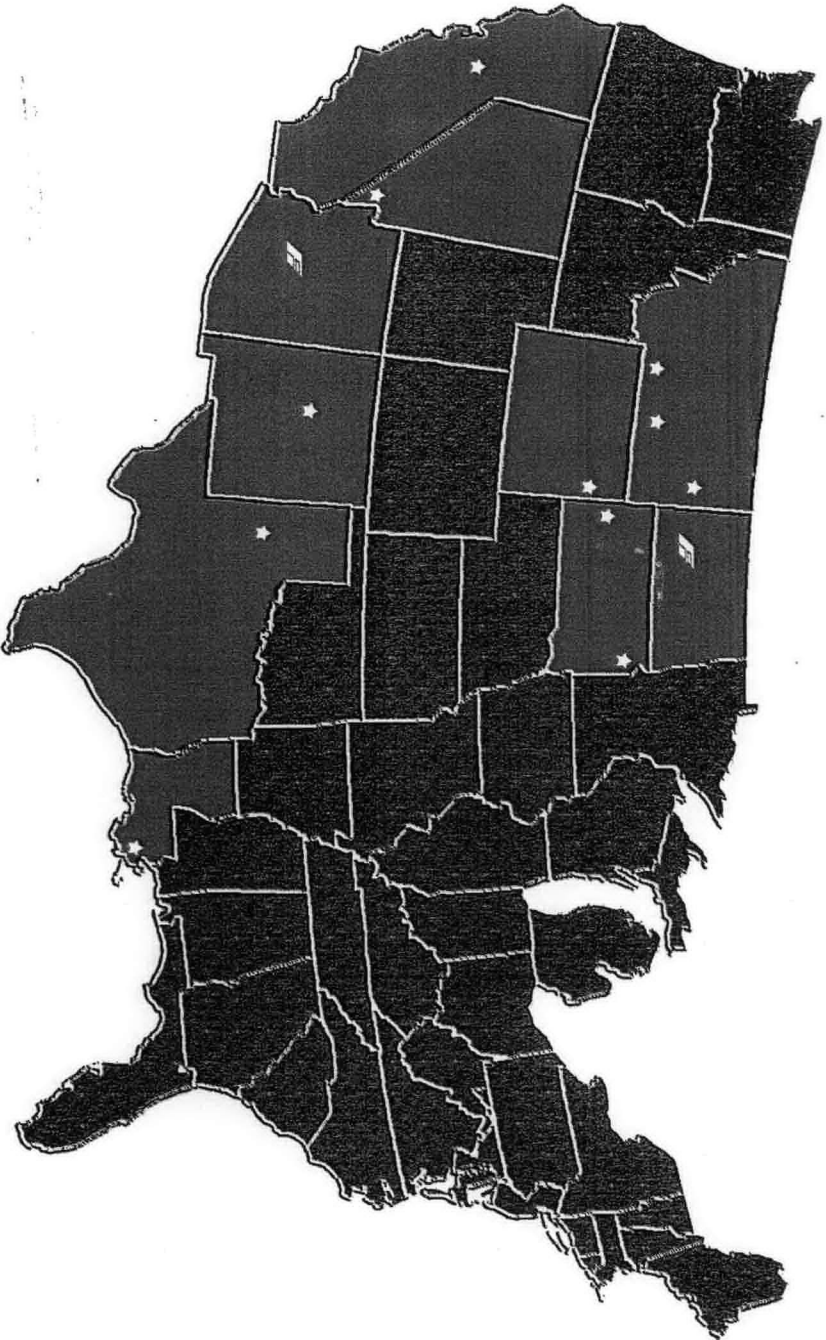
Shortly after being brought in for this first levee job, we began work as a subcontractor on another job as well as being awarded the prime contractor for several others. Most of the work is the same for each job. Some entail de-grading existing levee from an elevation of 8' to an elevation of 2', placing high strength geotextile fabric, and then rebuilding to an elevation of 12.5'. Others include the installation of bridges. Whatever the challenge, the Fisher team stands ready to tackle these tough jobs!



Fisher Industries

WE LIVE THE TOUGH JOBS!

OUR LOCATIONS



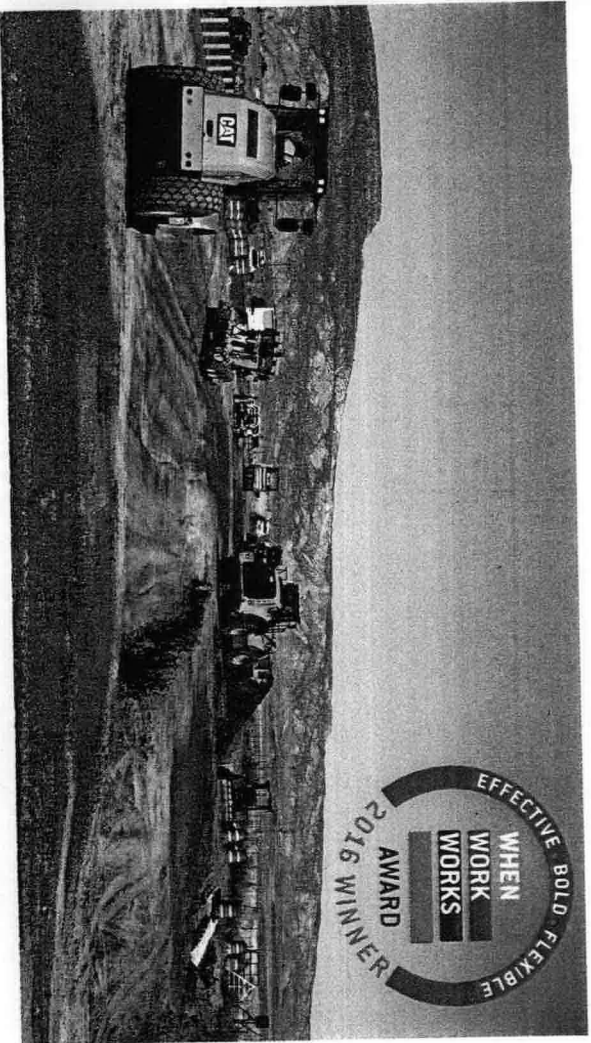
CORPORATE HEADQUARTERS:
Dickinson, North Dakota

SOUTHWEST OPERATIONS HEADQUARTERS:
Tempe, Arizona

OFFICES:
Belle Chasse, Louisiana
Billings, Montana
Glendive, Montana
Livingston, Montana
Henderson, Nevada
Pacitas, New Mexico
Spearfish, South Dakota

COMMERCIAL PITS:
California
Montana
New Mexico
North Dakota
South Dakota
Texas
Wyoming

EMPLOYER AWARDS



WE HAVE BEEN RECOGNIZED FOR EXEMPLARY WORKPLACE PRACTICES

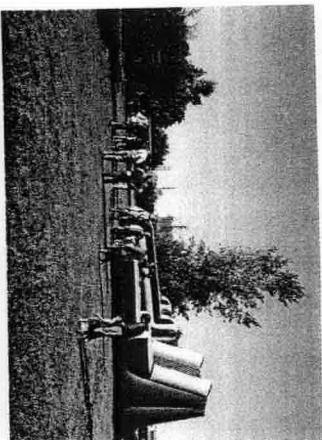
In 2016, Fisher Industries was honored with a *When Work Works Award* for our effective workplace strategies to increase business and employee success. The award is a result of a rigorous assessment.

Work sites must qualify by ranking in the top 20 percent of the country based on a nationally representative sample of employers. Two-thirds of the evaluation of applicants comes from an employee survey. Applicants are evaluated on six research-based ingredients of an effective workplace: opportunities for learning; a culture of trust; work/life fit; supervisor support for work success; autonomy; and satisfaction with earnings, benefits, and opportunities for advancement – all factors associated with employee health, well-being and engagement.

"We truly value our employees, and understand that doing things to help them find balance in their work and personal lives helps to improve productivity, and ultimately both the employee and the company reap the benefits."
 – Tommy Fisher, Company President.

ONE OF THE 50 BEST PLACES TO WORK

Fisher Industries has been named one of the *50 Best Places to Work* by a regional magazine that covers the northern Plains. Employees of companies were invited to complete Employee Engagement and Satisfaction Surveys to rate their employers in areas including work environment, employee benefits, and employee happiness. Upon making this list, a company has succeeded in creating work environments that foster collaboration and fun, provide ample opportunities for employee professional growth, and implement corporate structures that allow input from all team members. Fisher Industries strives to continue to satisfy these areas for all of our employees.



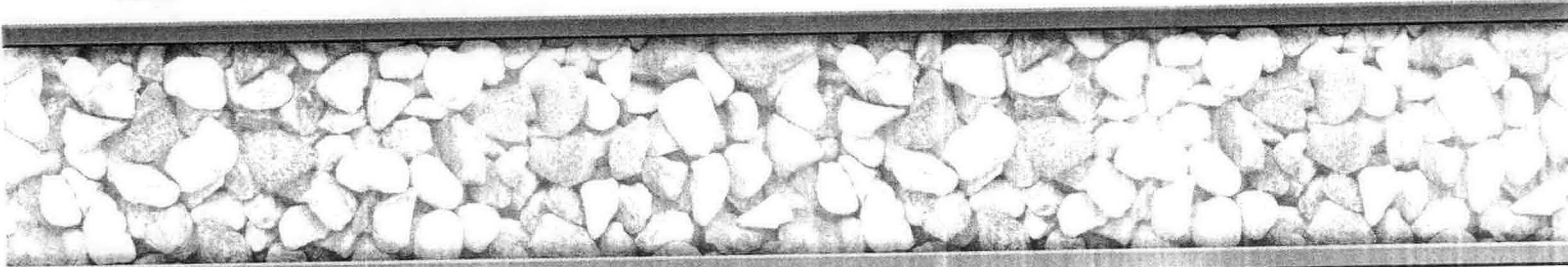
WE LIKE THE TOUGH JOBS!

FISHER INDUSTRIES

3020 Energy Drive
Dickinson, ND 58601 USA
800.932.8740 701.456.9184
www.fisherind.com



YouTube



Fisher Industries is: Fisher Sand & Gravel Company, General Steel & Supply Company, Fisher Sand & Gravel - New Mexico, Inc., Arizona Drilling & Blasting, Fisher Grading & Excavation, Fisher Ready Mix, Southwest Asphalt, Southwest Asphalt Paving

Fisher Sand & Gravel
14402 Frankford Ave.
Lubbock, TX 79424

FILED FOR RECORD
TIME 2:11 pm

APR 20 2018

Sharon Ferguson, Brown County Clerk
Deputy 

Brownwood County
200 South Broadway
Brownwood, TX 76801

Blasting and Crushing Limestone
and Caliche Rock Proposal